

Cannabis
Processing
**Temperature
Management
Solutions**



BriskHeat®



SRL/SRP Heavy-Duty Silicone Rubber Heating Blankets

Features & Benefits

- Suitable for large range of surfaces and objects
- Moisture, chemical, and radiation resistant - IP56
- Exposure temperature range: -60°F to 450°F (51°C to 232°C)
- 48 in (1219 mm) silicone rubber power cord with bare wire (no plug)

Ordering Information

| Part No. (SRL/SRP)* | Width in (mm) | Length in (mm) | Watts SRL Series | Watts SRP Series | PSA Adhesive |
|------------------------|------------------|-------------------|------------------------|------------------------|-----------------|
| SR_06121P | 6 (152) | 12 (305) | 180 | 90 | PSA |
| SR_06241P | 6 (152) | 24 (610) | 360 | 180 | PSA |
| SR_12121P | 12 (305) | 12 (305) | 360 | 180 | PSA |
| SR_12241P | 12 (305) | 24 (610) | 720 | 360 | PSA |
| SR_06121 | 6 (152) | 12 (305) | 180 | 90 | No PSA |
| SR_06241 | 6 (152) | 24 (610) | 360 | 180 | No PSA |
| SR_12121 | 12 (305) | 12 (305) | 360 | 180 | No PSA |
| SR_12241 | 12 (305) | 24 (610) | 720 | 360 | No PSA |

*SRL = 2.5 W/in², SRP = 1.25 W/in²



IMPORTANT:
Temperature
controllers are required
for heaters without
a built-in temperature
controller.



Silicone Rubber Heating Blankets with Built-in Controls

Features & Benefits

- Built-in adjustable thermostat
- Plug-and-play design
- Suitable for a large range of surfaces and objects
- Moisture, chemical, & radiation resistant; Grounded for safety

Three-Series Options

SRL-ADJ: Up to 425°F (218°C); 2.5 W/in² (0.39 W/cm²)

High watt density; High-temperature; For metal

SRP-ADJ: Up to 160°F (71°C); 1.25 W/in² (0.19 W/cm²)

Low watt density; Low-temperature; For poly

SRM-ADJ: Up to 160°F (71°C); 2.5 W/in² (0.39 W/cm²)

High watt density; Low-temperature; For increased heat and accuracy at lower temperatures; For metal



Ordering Part No. Matrix

| Size in | Size mm | Product Series | Width | Length | Voltage | Pressure Sensitive Adhesive | Ordering Options |
|------------|------------|--|----------|----------|------------------------------|------------------------------------|--|
| 6 x 12 | 152 x 305 | SRL (2.5 W/in ²) SRP (1.25 W/in ²) SRM (2.5 W/in ²) | (inches) | (inches) | 1 (120 V) 2 (240 V) | P (w/PSA) Blank (w/o PSA) | ADJ (w/o Plug, Ferrule Crimped Wire Terminations) (CSA & CE) |
| 6 x 24 | 152 x 610 | | | | | | |
| 6 x 36 | 152 x 914 | | | | | | |
| 12 x 12 | 305 x 305 | | | | | | |
| 12 x 24 | 305 x 610 | | | | | | |
| 12 x 36 | 305 x 914 | | | | | | |
| 18 x 18 | 457 x 457 | | | | | | |
| 18 x 36 | 457 x 914 | | | | | | |
| 24 x 24 | 610 x 610 | | | | | | |

Example: **SRL12362-P-ADJ**



TC4000 Digital**Temperature Controller****Features & Benefits**

- Suitable for outdoor, indoor, or industrial environments
- Ideal for applications up to 60 amps total
- Available as dual zone
- Handles self-regulating cable in-rush and high-watt heaters
- Circuit breakers for over-current protection

**Ordering Information**

| Part No. | Description |
|------------|---|
| TC4111N | Single zone, 30 amp, 100-240 VAC, 32° to 104°F ambient use |
| TC4222N | Dual zone, (2) 30 amp, 480 VAC single phase, 32° to 104°F ambient use |
| TB4101-650 | Single zone, 15 amp, 120 VAC, 150° to 650°F range |
| TB4422-650 | Dual zone, (2) 50 amp contactors, 240 VAC, 150° to 650°F range |

TB4000 High-Capacity**Temperature Controller****Features & Benefits**

- Bulb and capillary
- Clear viewable plastic door
- High amperage load up to 50 amps per zone
- Suitable for outdoor use
- Simple dial setpoint
- Multiple configurations
- NEMA 4X enclosure



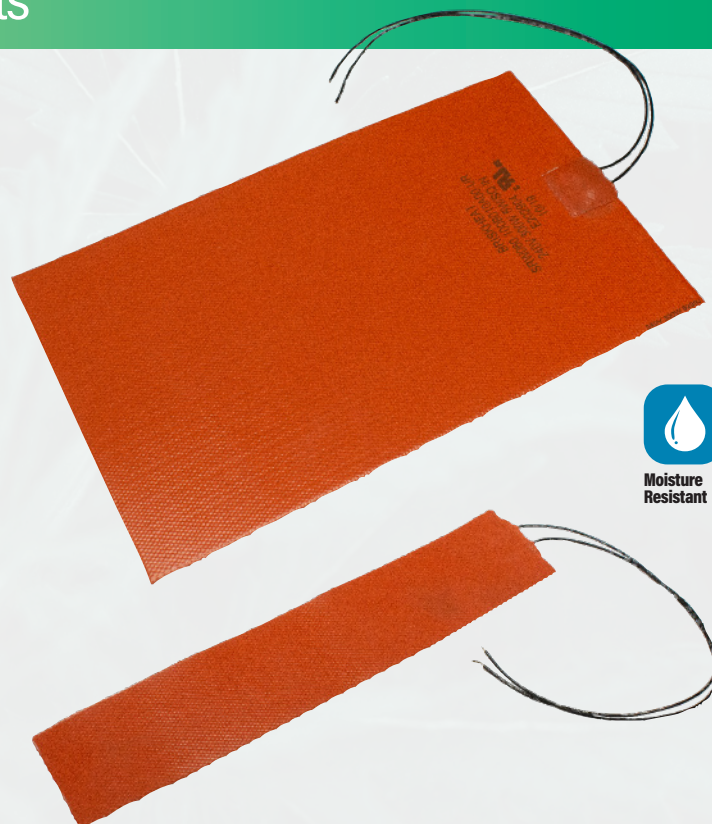
Other input and output configurations available

SRW Silicone Rubber Heating Blankets**Features & Benefits**

- Thin, low profile, and economical solution
- Easy-to-apply industrial strength pressure-sensitive adhesive backing option
- Heating element is laminated between two layers of fiber-glass-reinforced silicone rubber
- Suitable for a large range of surfaces like tanks, hoppers, conveyers, silos, and other vessels
- Exceptional durability for a wide range of industrial uses
- Moisture resistant

Ordering Information

| Part No. | Width in (mm) | Length in (mm) | Watts |
|----------------------|---------------|----------------|-------|
| SRW020-100A010A00-UR | 2 (51) | 10 (254) | 100 |
| SRW020-200A010A00-UR | 2 (51) | 20 (508) | 200 |
| SRW020-300A010A00-UR | 2 (51) | 30 (762) | 300 |
| SRW040-100A010A00-UR | 4 (102) | 10 (254) | 200 |
| SRW040-200A010A00-UR | 4 (102) | 20 (508) | 400 |
| SRW040-300A010A00-UR | 4 (102) | 30 (914) | 600 |
| SRW060-100A010A00-UR | 6 (152) | 10 (254) | 300 |
| SRW060-200A010A00-UR | 6 (152) | 20 (508) | 600 |
| SRW060-300A010A00-UR | 6 (152) | 30 (762) | 900 |
| SRW060-400A010A00-UR | 6 (152) | 40 (1016) | 1200 |



CAUS

XtremeFLEX® Silicone Rubber Heating Tape

Features & Benefits

- Moisture and chemical resistant
- Exceptionally flexible
- Maximum exposure temperature 450°F (232°C)

IMPORTANT: Temperature controllers are required for heaters without a built-in temperature controller.



| Part No. 120 VAC | Part No. 240 VAC | Tape Width in (mm) | Tape Length in (m) | Watts |
|---------------------|---------------------|-----------------------|-----------------------|-------|
| BS0051020L | BS0052020L | 0.50 (13) | 2 (0.6) | 52 |
| BS0051040L | BS0052040L | 0.50 (13) | 4 (1.2) | 104 |
| BS0051060L | BS0052060L | 0.50 (13) | 6 (1.8) | 156 |
| BS0051080L | BS0052080L | 0.50 (13) | 8 (2.4) | 209 |

| Part No. 120 VAC | Part No. 240 VAC | Tape Width in (mm) | Tape Length ft (m) | Watts |
|---------------------|---------------------|-----------------------|-----------------------|-------|
| BS0101020L | BS0102020L | 1 (25) | 2 (0.6) | 104 |
| BS0101040L | BS0102040L | 1 (25) | 4 (1.2) | 209 |
| BS0101060L | BS0102060L | 1 (25) | 6 (1.8) | 313 |
| BS0101080L | BS0102080L | 1 (25) | 8 (2.4) | 418 |

Other standard sizes and voltages available.



HTC/HWC/HTCE XtremeFLEX® Heating Cords

Features & Benefits

- Designed for use on small tubes, vessels, or any application where space is limited
- Flexible enough to wrap around objects as small as 0.125 in (3 mm) diameter
- Rapid thermal response
- Grounded and non-grounded models
- Includes high-temperature tie-downs for easy installation
- Versatile enough to wrap around and heat a wide range of laboratory apparatus, glassware, pipes, weldments, etc.
- Wide range of applications includes viscosity control, laboratory, temperature maintenance, and melting solids
- Easy-to-use
- Suitable for high temperatures

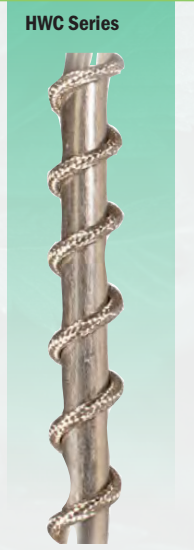
HTCE Series — High-temperature grounded, CE approved



HTC Series



HWC Series



HTCE Series



All Heating Cords:



Suitable for
Electrically
Conductive
Surfaces

XtremeFLEX® Silicone Rubber Heating Tapes

with Adjustable Thermostat Control

HSTAT Series – Non-Grounded

Temperature Range: Up to 425°F (218°C)

- Ideal for higher temperature applications



Ordering Information

| Part No. 120 VAC | Part No. 240 VAC | Width in (mm) | Length ft (m) | Watts |
|---------------------|---------------------|------------------|------------------|-------|
| HSTAT051002 | HSTAT052002 | 0.5 (13) | 2 (0.6) | 72 |
| HSTAT051004 | HSTAT052004 | 0.5 (13) | 4 (1.2) | 144 |
| HSTAT051006 | HSTAT052006 | 0.5 (13) | 6 (1.8) | 216 |
| HSTAT051008 | HSTAT052008 | 0.5 (13) | 8 (2.4) | 288 |
| HSTAT051010 | HSTAT052010 | 0.5 (13) | 10 (3.1) | 360 |
| HSTAT101002 | HSTAT102002 | 1.0 (25) | 2 (0.6) | 144 |
| HSTAT101004 | HSTAT102004 | 1.0 (25) | 4 (1.2) | 288 |
| HSTAT101006 | HSTAT102006 | 1.0 (25) | 6 (1.8) | 432 |
| HSTAT101008 | HSTAT102008 | 1.0 (25) | 8 (2.4) | 576 |
| HSTAT101010 | HSTAT102010 | 1.0 (25) | 10 (3.1) | 720 |
| HSTAT201002 | HSTAT202002 | 2.0 (51) | 2 (0.6) | 288 |
| HSTAT201004 | HSTAT202004 | 2.0 (51) | 4 (1.2) | 576 |
| HSTAT201006 | HSTAT202006 | 2.0 (51) | 6 (1.8) | 864 |
| HSTAT201008 | HSTAT202008 | 2.0 (51) | 8 (2.4) | 1152 |
| HSTAT201010 | HSTAT202010 | 2.0 (51) | 10 (3.1) | 1440 |
| HSTAT301002 | HSTAT302002 | 3.0 (76) | 2 (0.6) | 432 |
| HSTAT301004 | HSTAT302004 | 3.0 (76) | 4 (1.2) | 864 |
| HSTAT301006 | HSTAT302006 | 3.0 (76) | 6 (1.8) | 1296 |
| HSTAT301008 | HSTAT302008 | 3.0 (76) | 8 (2.4) | 1440 |
| HSTAT301010 | HSTAT302010 | 3.0 (76) | 10 (3.1) | 1800 |

HSTAT-G Series – Grounded

Temperature Range: Up to 425°F (218°C)

NEW!

| Part No. 120 VAC | Part No. 240 VAC | Width in (mm) | Length ft (m) | Watts |
|---------------------|---------------------|------------------|------------------|-------|
| HSTAT101002G | HSTAT102002G | 1.0 (25) | 2 (0.6) | 144 |
| HSTAT101004G | HSTAT102004G | 1.0 (25) | 4 (1.2) | 288 |
| HSTAT101006G | HSTAT102006G | 1.0 (25) | 6 (1.8) | 432 |
| HSTAT101008G | HSTAT102008G | 1.0 (25) | 8 (2.4) | 576 |
| HSTAT101010G | HSTAT102010G | 1.0 (25) | 10 (3.1) | 720 |

MSTAT Series

Temperature Range: Up to 160°F (71°C)

NEW!

- Will not overheat contents or melt PVC pipe and vessels
- Enhanced precision for lower-temperature applications



| Part No. 120 VAC | Part No. 240 VAC | Width in (mm) | Length ft (m) | Watts |
|---------------------|---------------------|------------------|------------------|-------|
| MSTAT101002 | MSTAT102002 | 1.0 (25) | 2 (0.6) | 144 |
| MSTAT101004 | MSTAT102004 | 1.0 (25) | 4 (1.2) | 288 |
| MSTAT101006 | MSTAT102006 | 1.0 (25) | 6 (1.8) | 432 |
| MSTAT101008 | MSTAT102008 | 1.0 (25) | 8 (2.4) | 576 |
| MSTAT101010 | MSTAT102010 | 1.0 (25) | 10 (3.0) | 720 |
| MSTAT101015 | MSTAT102015 | 1.0 (25) | 15 (4.5) | 1080 |
| MSTAT101020 | MSTAT102020 | 1.0 (25) | 20 (6.1) | 1200 |
| MSTAT101030* | MSTAT102030* | 1.0 (25) | 30 (9.1) | 1440 |
| MSTAT101040* | MSTAT102040* | 1.0 (25) | 40 (12.2) | 1440 |
| MSTAT101050* | MSTAT102050* | 1.0 (25) | 50 (15.2) | 1440 |

*Reduced watt density

Metal-Housed Heating Mantles

Features & Benefits

- Uniform heat distribution for round-bottom flasks
- Safe to touch tabletop design
- Operating temperatures up to 842°F (450°C)
- Min/max heating for low/high volume contents

Heating Mantle without Built-In Control

- Ideal for applications requiring tight temperature control
- Temperature controller **required** for use with this heater



Heating Mantle with Built-In Control

- Built-in time percentage temperature controller



Heating Mantle with Built-In Control & Magnetic Stirrer

- Built-in time percentage temperature controller
- Built-in magnetic stirrer



| Part No. 120 V | Part No. 240 V | Watts | Flask Size (ml) |
|-------------------|-------------------|-------|--------------------|
| HM0050MH1 | HM0050MH2 | 60 | 50 |
| HM0100MH1 | HM0100MH2 | 110 | 100 |
| HM0250MH1 | HM0250MH2 | 165 | 250 |
| HM0500MH1 | HM0500MH2 | 220 | 500 |
| HM1000MH1 | HM1000MH2 | 325 | 1000 |
| HM2000MH1 | HM2000MH2 | 545 | 2000 |
| HM3000MH1 | HM3000MH2 | 650 | 3000 |
| HM4000MH1 | HM4000MH2 | 815 | 4000 |
| HM5000MH1 | HM5000MH2 | 935 | 5000 |
| HM6000MH1 | HM6000MH2 | 1090 | 6000 |

| Part No. 120 V | Part No. 240 V | Watts | Flask Size (ml) |
|-------------------|-------------------|-------|--------------------|
| HM0050MC1 | HM0050MC2 | 60 | 50 |
| HM0100MC1 | HM0100MC2 | 110 | 100 |
| HM0250MC1 | HM0250MC2 | 165 | 250 |
| HM0500MC1 | HM0500MC2 | 220 | 500 |
| HM1000MC1 | HM1000MC2 | 325 | 1000 |
| HM2000MC1 | HM2000MC2 | 545 | 2000 |
| HM3000MC1 | HM3000MC2 | 650 | 3000 |
| HM4000MC1 | HM4000MC2 | 815 | 4000 |
| HM5000MC1 | HM5000MC2 | 935 | 5000 |
| HM6000MC1 | HM6000MC2 | 1090 | 6000 |

Stand not included

| Part No. 120 V | Watts | Flask Size (ml) |
|-------------------|-------|--------------------|
| HM0100MS1 | 110 | 100 |
| HM0250MS1 | 165 | 250 |
| HM0500MS1 | 220 | 500 |
| HM1000MS1 | 325 | 1000 |

Cloth Heating Mantles

Upper Hemispherical Cloth Heating Mantle

- Uniform heat distribution to top half of flasks
- Premolded to optimize heating
- Laces for easy installation and removal
- Plug and play with SDC temperature controller

| Part No. 120 VAC | Part No. 240 VAC | Size ml | Watts |
|---------------------|---------------------|------------|-------|
| HM0250-TS1 | HM0250-TS2 | 250 | 140 |
| HM0500-TS1 | HM0500-TS2 | 500 | 140 |
| HM1000-TS1 | HM1000-TS2 | 1000 | 140 |
| HM2000-TS1 | HM2000-TS2 | 2000 | 200 |
| HM3000-TS1 | HM3000-TS2 | 3000 | 200 |
| HM5000-TS1 | HM5000-TS2 | 5000 | 300 |



Lower Hemispherical Heating Mantle

- Lower hemispherical heating mantle (other styles available)
- Uniform heat distribution for a variety of round bottom flasks
- Ideal for use with a basket ring stand
- Maximum exposure temperature up to 842°F (450°C)

| Part No. 120 VAC | Part No. 240 VAC | Size ml | Watts |
|---------------------|---------------------|------------|-------|
| HM0050-HS1 | HM0050-HS2 | 50 | 60 |
| HM0100-HS1 | HM0100-HS2 | 100 | 80 |
| HM0125-HS1 | HM0125-HS2 | 125 | 80 |
| HM0200-HS1 | HM0200-HS2 | 200 | 100 |
| HM0250-HS1 | HM0250-HS2 | 250 | 180 |
| HM0500-HS1 | HM0500-HS2 | 500 | 270 |
| HM1000-HS1 | HM1000-HS2 | 1000 | 380 |
| HM2000-HS1 | HM2000-HS2 | 2000 | 500 |
| HM3000-HS1 | HM3000-HS2 | 3000 | 500 |
| HM5000-HS1 | HM5000-HS2 | 5000 | 600 |
| HM12000-HS1 | HM12000-HS2 | 12000 | 1300 |



Silicone Rubber Griffin Beaker Heaters

- Provides even heat distribution for Griffin and standard beaker heating applications
- Easy-to-install and remove with hook and loop fastener
- Provides easy-access to graduation
- Maximum exposure temperature up to 450°F (232°C)

| Part No. 120 VAC | Part No. 240 VAC | Size ml | Diameter in (mm) | Heater Height in (mm) | Heater Length in (mm) | Watts |
|---------------------|---------------------|------------|---------------------|-----------------------------|-----------------------------|-------|
| GBH0250-1 | GBH0250-2 | 250 | 2.7 (69) | 3.0 (76) | 12.25 (311) | 150 |
| GBH0400-1 | GBH0400-2 | 400 | 3.0 (76) | 3.5 (89) | 13.75 (349) | 200 |
| GBH0600-1 | GBH0600-2 | 600 | 3.6 (91) | 4.0 (102) | 15.00 (381) | 250 |
| GBH1000-1 | GBH1000-2 | 1000 | 4.3 (109) | 4.6 (117) | 17.25 (438) | 350 |

IMPORTANT:
Temperature
controller
is required.





Moisture
& Chemical
Resistant

SDX PID Digital Temperature Controller

Features & Benefits

- Advanced PID temperature control
- Programmable in °F and °C
- 5 ft (1.5 m) temperature sensor and heater plug included
- Power cord plugs and sensors to meet individual needs

Ordering Information

| Part No. | Voltage | Sensor Type | Input Plug |
|----------|---------------|-------------|---|
| SDXJA | 100 - 125 VAC | Type-J T/C |  |
| SDXKA | 100 - 125 VAC | Type-K T/C | |
| SDXRA | 100 - 125 VAC | PT100-RTD | |
| SDXJC | 100 - 240 VAC | Type-J T/C |  |
| SDXKC | 100 - 240 VAC | Type-K T/C | |
| SDXRC | 100 - 240 VAC | PT100-RTD | |



Plug & Play
Power Cord





SDC Digital Temperature Controller

Features & Benefits

- Compact on/off benchtop design
- Available in °F and °C
- Integrated thermocouple and power cord
- For indoor, dry environment use

Ordering Information

| Part No. | Voltage | Sensor Type | Input Plug |
|------------|---------------|-------------|---|
| SDC120JF-A | 100 - 125 VAC | Type-J T/C |  |
| SDC120KF-A | 100 - 125 VAC | Type-K T/C | |
| SDC240JF-A | 100 - 240 VAC | Type-J T/C |  |
| SDC240KF-A | 100 - 240 VAC | Type-K T/C | |





Plug & Play

HL101 Digital Temperature Limit Controller

Features & Benefits

- Includes receptacle to connect HL101 to existing temperature controller or controlled device*
- 5 ft (1.5 m) power cord and 10 ft (3 m) temperature sensor included
- Adds high-limit safety cutoff for dry environment applications
- Displays high limit or current temperature

Ordering Information

| Part No. | Voltage | Sensor Type | Temperature Display | Input Plug / Output Receptacle |
|-----------|---------|-------------|---------------------|---|
| HL120JA-F | 120 VAC | Type-J T/C | °F |  |
| HL120KA-F | | Type-KT/C | °F | |
| HL120JA-C | | Type-J T/C | °C | |
| HL120KA-C | | Type-KT/C | °C | |
| HL240JC-F | 240 VAC | Type-J T/C | °F |  |
| HL120KC-F | | Type-KT/C | °F | |
| HL120JC-C | | Type-J T/C | °C | |
| HL120KC-C | | Type-KT/C | °C | |



Plug & Play

*** IMPORTANT: HL101 requires a temperature controller (sold separately) except where included on heater.**

Silicone Rubber Drum & Pail Heaters Heavy & Extra-Heavy Duty

Features & Benefits

- Exceptional durability and flexibility for a wide range of poly and metal drum/pail heating applications
- Moisture, chemical, and radiation resistant - IP54
- 6 ft (1.8 m) long power cord NEMA 5-15 plug

For Metal Drums/Pails

| Part No. 120 VAC | Size Gallon (Liter) | Watts |
|---------------------|------------------------|-------|
| DHCS10 | 3.5 - 7 (13 - 26) | 550 |
| DHCS11 | 15 - 16 (57 - 61) | 700 |
| DHCS13 | 30 (114) | 1000 |
| DHCS15 | 55 (200 - 208) | 1200 |

For Poly (Non-Metal) Drums/Pails

| Part No. 120 VAC | Size Gallon (Liter) | Watts |
|---------------------|------------------------|-------|
| DPCS10 | 3.5 - 7 (13 - 26) | 150 |
| DPCS11 | 15 - 16 (57 - 61) | 208 |
| DPCS13 | 30 (114) | 250 |
| DPCS15 | 55 (200 - 208) | 300 |

CSA/UL Approved Option: Add an "A" at the end of the part number, heater will have bare wire leads.



Moisture
& Chemical
Resistant

Accessories

| Part No. | Description |
|----------|--|
| 10180 | Replacement spring for BriskHeat® Silicone Rubber Drum Heaters |



IMPORTANT: Temperature controllers are required for heaters without a built-in temperature controller.



DHCX Hazardous-Area Rated Drum Heater

Features & Benefits

- Hazardous-area rated
- Moisture, chemical, and radiation resistant

Ordering Information for T3 Environments

| Part No. 120 VAC NEMA 5-15 Plug | 240 VAC bare wire leads | Size Gal (l) | Diameter in (mm) | Watts | Length in (mm) | Width in (mm) | High Limit Thermostat °F (°C) |
|--|----------------------------|-----------------|---------------------|-------|-------------------|------------------|-------------------------------------|
| DHCX131000T3 | DHCX231000T3 | 30 (114) | 18.6 (473) | 1000 | 58.5 (1486) | 8 (203) | 292 (145) |
| DHCX151300T3 | DHCX251300T3 | 55 (208) | 22.3 (566) | 1300 | 70.0 (1778) | 8 (203) | 292 (145) |

Ordering Information for T4 Environments

| Part No. 120 VAC NEMA 5-15P Plug | 240 VAC bare wire leads | Size Gal (l) | Diameter in (mm) | Watts | Length in (mm) | Width in (mm) | High Limit Thermostat °F (°C) |
|---|----------------------------|-----------------|---------------------|-------|-------------------|------------------|-------------------------------------|
| DHCX131000T4A | DHCX231000T4A | 30 (114) | 18.6 (473) | 1000 | 58.5 (1486) | 8 (203) | 158 (70) |
| DHCX151300T4A | DHCX251300T4A | 55 (208) | 22.3 (566) | 1300 | 70.0 (1778) | 8 (203) | 158 (70) |

Ordering Option: Without controlling thermostat and pilot light. Replace "C" with "N" in part number.

External control is required with this option.



Moisture
& Chemical
Resistant



Full-Coverage Drum Heaters

Features & Benefits

- Easy-to-use digital temperature controller
- Designed for metal and poly drums
- Ideal for reducing liquid viscosity and melting solids such as wax and grease
- Heat-up drum contents to a required temperature
- Digital on/off temperature controller:
 - >> 50°F to 450°F (10°C to 232°C) for metal drums
 - >> 50°F to 160°F (10°C to 71°C) for poly drums
- 6 ft (1.8 m) long power cord with crimped ferrule leads

Ordering Information

| Part No. 120 VAC | Size Gal (l) | Diameter in (mm) | Height in (mm) | No. of Zones | Drum Type | Watts |
|---------------------|-----------------|---------------------|-------------------|-----------------|--------------|---------------------|
| FGDHC55120DV | 55 (208) | 22.3 (566) | 36.4 (924) | 1 | Metal | 1600 |
| FGDHC30120D | 30 (114) | 18.6 (473) | 29.5 (749) | 1 | Metal | 1160 |
| FGDHC15120D | 16 (61) | 14.0 (355) | 26.7 (678) | 1 | Metal | 870 |
| FGDHC5120D | 5 (19) | 11.1 (282) | 13.5 (343) | 1 | Metal | 550 |
| FGPDHC55120DV | 55 (208) | 22.3 (566) | 36.4 (924) | 1 | Poly | 770 |
| FGPDHC30120D | 30 (114) | 18.6 (473) | 29.5 (749) | 1 | Poly | 553 |
| FGDDC55240DV | 55 (208) | 22.3 (566) | 36.4 (924) | 2 | Metal | 3200 (1600/zone) |

Accessories

| Part No. | Description |
|-----------|---|
| FGDC55V | Drum Insulation Cover for 55 gallon (208 l) |
| FGDHSTRIP | 6 in (152 mm) wide strip that expands heater to fit up to a 24.2 in (615 mm) diameter drum Strip is necessary for heater to fit around drums with removable lids. |



Dual Zone - For Metal Drums
Designed to quickly melt viscous materials like molasses, syrups, etc.



Drum covers help reduce heat loss and speed up heat-up time

If your drum diameter is greater than what is shown, an FGDHSTRIP expansion strip may be required.

Wet-Area Full-Coverage Drum Heaters

Features & Benefits

- Water-resistant design for indoor/outdoor use and in washdown environments
- Insulated to maximize efficiency and heat-up time
- Operating Temperature: Up to 140°F (60°C)
- Built-in high-limit safety thermostat: 185°F (85°C)
- 6 ft (1.8 m) long power cord with crimped ferrule leads

Ordering Information

| Part No. 120VAC | Size gal (l) | Diameter in (mm) | Height in (mm) | Watts |
|--------------------|-----------------|---------------------|-------------------|-------|
| FGPDHWC55120DV | 55 (208) | 22.3 (566) | 36.4 (924) | 600 |



Moisture
& Chemical
Resistant



Plug & Play



Drum covers help reduce heat loss and speed up heat-up time



Adjustable nylon straps with buckles

Drum Immersion Heaters

Features & Benefits

- Can be used on poly or metal drums
- Maximum thermal efficiency and faster heat-up rate compared to standard full-coverage heaters*
- Screws directly into top of drum for easy installation
- Grounded for safety
- Food-safe construction
- For use with non-acidic materials

Ordering Information

| Part No. | Voltage | Temperature Display Units | Wattage | Drum Size Gal (l) | Drum Diameter In (mm) | Drum Height In (mm) |
|----------|---------|---------------------------|---------|-------------------|-----------------------|---------------------|
| DHI120 | 120 | °F | 1000 | 55 (208) | 22 (57) | 36 (914) |
| DHI240 | 240 | °F | 1000 | 55 (208) | 22 (57) | 36 (914) |
| DHI240C | 240 | °C | 1000 | 55 (208) | 22 (57) | 36 (914) |

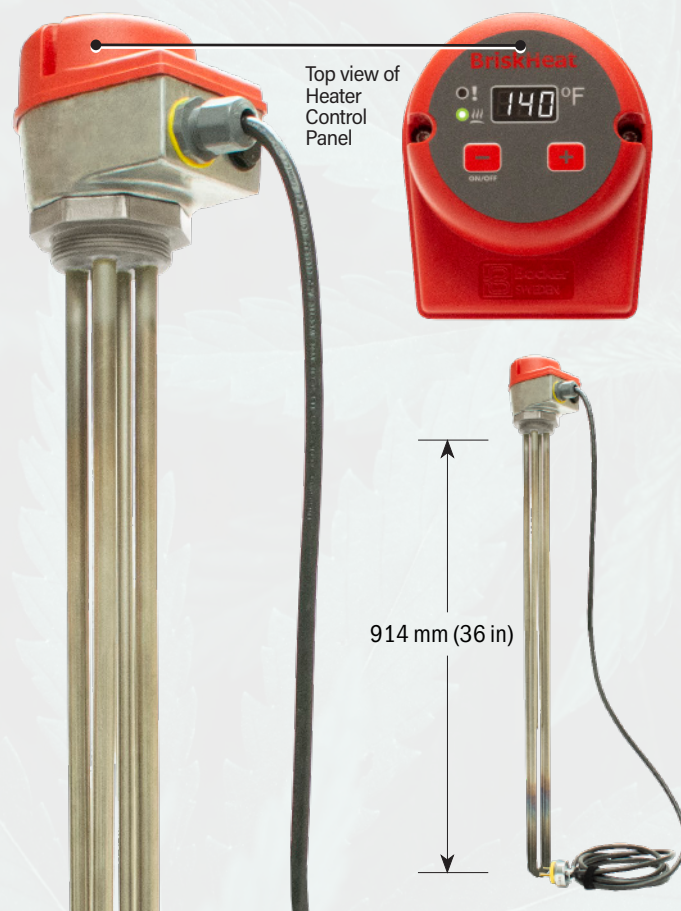


240 VAC models

Caution: The heating element should be fully submerged and should not be used with highly-concentrated acids.

***When paired with insulator.**

Other sizes and styles of immersion heaters are available upon request. Can also be combined with BriskHeat's IBC/Tote Tank Heaters.



Wet-Area Tote Tank & IBC Heaters

Features & Benefits

- Water-resistant design for indoor/outdoor use and in washdown environments
- Lightweight and easy-to-install
- Easy-to-use digital temperature controller
- Operating Temperature: Up to 140°F (60°C)
- Built-in High-Limit Safety Thermostat: 185°F (85°C)

Ordering Information

| Part No. | Heater Height in (mm) | Watts | Capacity gal (l) |
|---------------|-----------------------|-------|-----------------------|
| TOTEW361-ADJV | 36 (914) | 1440 | 175 - 250 (640 - 950) |
| TOTEW421-ADJV | 42 (1067) | 1440 | 275 (1000) |
| TOTEW481-ADJV | 48 (1220) | 1440 | 330 (1250) |

Accessories

| Part No. | Description |
|------------|---|
| TOTEW-TOPV | Insulating top cover minimizes heat loss and fits all sizes |



Fully insulated design with digital control



Adjustable nylon straps with buckles



Insulating cover



Moisture Resistant



Plug & Play

Full-Coverage Tote Tank & IBC Heaters

Features & Benefits

- Wraparound full-coverage blanket heater
- Operating temperature is adjustable up to 160°F (71°C)
- Wide range of applications
- Adjustable straps to fit multiple tank sizes and shapes
- 6 ft (1.8 m) long power cord with crimped ferrule leads
- Ideal for reducing liquid viscosity and melting solids such as wax and grease

Ordering Information

| Part No. 120 VAC w/ NEMA 5-15P plug | Part No. 240 VAC w/ NEMA 6-15P plug | Height in (mm) | Capacity gal (l) | Tank Perimeter Minimum in (mm) | Tank Perimeter Maximum in (mm) | Weight lbs (kg) |
|--|--|-------------------|------------------------|---|---|--------------------|
| TOTE361-ADJV | TOTE362-ADJV | 36 (914) | 175 - 250 (640-950) | 160 (4060) | 192 (4880) | 34 (15) |
| TOTE421-ADJV | TOTE422-ADJV | 42 (1067) | 275 (1000) | 160 (4060) | 192 (4880) | 40 (18) |
| TOTE481-ADJV | TOTE482-ADJV | 48 (1220) | 330 (1250) | 160 (4060) | 192 (4880) | 46 (21) |

Ordering Options

European Lead Wire Option (240 V Only): Add a "-CVE" at the end of the part number for crimped wire ferrule terminated leads.

Accessories

| Part No. | Description |
|-----------|--|
| TOTE-TOPV | Insulated top cover minimizes heat loss and fits all sizes |



Insulating Cover



IBC/Tote Tank Insulators

Features & Benefits

- Designed for indoor/outdoor or washdown locations
- Easy-to-install - Just select height or capacity
- Universal fit
- Removable and reusable
- Extra-durable polyester cloth material
- 1/2 in thick closed-cell neoprene insulation
- Straps with buckles closure - 3 on sides, 2 on top

Ordering Information

| Part No. | Height in (mm) | Capacity gal (l) | Tank Perimeter Minimum in (mm) | Tank Perimeter Maximum in (mm) |
|-------------|-------------------|---------------------|---|---|
| TOTEW36IV | 36 (914) | 175-250 (640-950) | 160 (4060) | 192 (4880) |
| TOTEW42IV | 42 (1067) | 275 (1000) | 160 (4060) | 192 (4880) |
| TOTEW48IV | 48 (1220) | 330 (1250) | 160 (4060) | 192 (4880) |
| TOTEW-TOPFV | Top (N/A) | N/A | 160 (4060) | 192 (4880) |



Insulator Cover with center access port (sold separately)



Moisture
Resistant



Mica, Band, Nozzle, & Strip Heaters

Features & Benefits

- High-temperature galvanized steel sheath provides oxidation resistance and extreme durability
- Premium-grade mica insulation provides excellent electrical isolation and corrosion resistance
- Stainless steel barrel clamps maintain clamping pressure at elevated temperatures
- Nickel/chromium resistance wire is evenly wound for uniform heat distribution and reliable accuracy
- Low-profile designs are approximately 1/8 in (3 mm) thick
- High-watt density up to 40 W/in² (6 W/cm²) for high-performance heating in demanding applications
- Maximum operating temperature up to 900°F (482°C) standard, or 1200°F (649°C) with stainless steel construction

Nozzle (NZ Series)

Diameters: 1-3 in (25-76 mm)

Widths: 1-6 in (25-152 mm)

Voltages: 120, 240 VAC

Watts: Up to 1000 W

Construction:

- >> One-piece design
- >> 10 in (254 mm) fiberglass leads
- >> SS barrel clamps

Band (BA Series)

Diameters: 3½-12 in (89-305 mm)

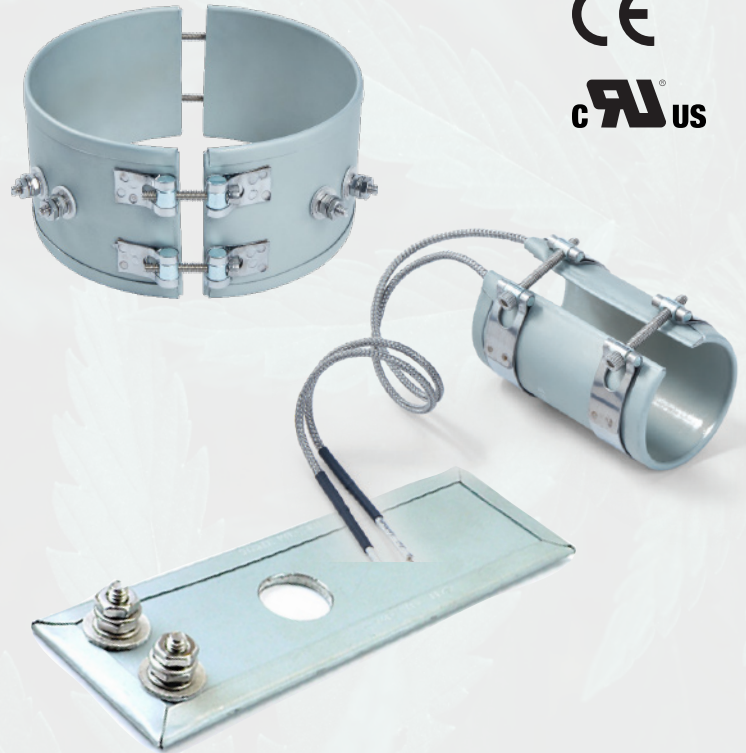
Widths: 1-4 in (25-102 mm)

Voltages: 120, 240, 480 VAC

Watts: Up to 2300 W

Construction:

- >> One-piece or two-piece designs
- >> Post terminals
- >> SS barrel clamps



Cartridge Heaters

Customize Your Cartridge Heater!

BriskHeat Swaged Cartridges are the premier choice for the most demanding applications.

Choose from over 14,000 configurations available for immediate delivery or let us design a unique custom heater for your special application.

Watt Densities: Up to 300 W/in² (46.5 W/cm²)

End-Seals & Potting: Ceramic, lava and mica seals, cement, epoxy, RTV, or epoxy over RTV potting

Sheath: 304 SS, 316 SS, or incoloy

Fittings: Brass or SS single NPT, brass or SS double NPT, flange, mechanical stop

Lead Wire: Duraflex®, Teflon™, silicone rubber, or SJO cord

Construction: Double end, post terminal, bent, end tube, spring guard, internal thermocouple, flanges, mechanical stops, or square

Termination: Swaged-in leads, crimped-on leads, right angle leads, braid, SS conduit, ceramic beads, straight pins, and more

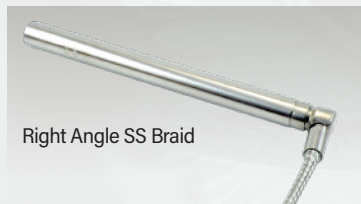
Circuit Options: Dual voltage, distributed wattage, or 3-phase



Fiberglass Leads



SS Braid



Right Angle SS Braid



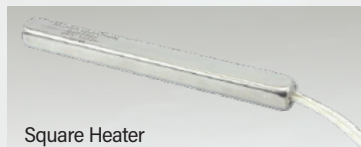
Brass NPT Fitting



Right-angle SS Conduit



Flange



Square Heater

INSUL-LOCK® Flexible Closed Cell Pipe Insulation

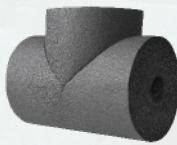
Features & Benefits

- Environmentally-friendly, CFC-free, closed-cell elastomeric thermal insulation
- Non-porous, fiber-free, and resistant to mold growth
- Compatible with heating cable and tapes
- Temperature range of -70°F to 220°F

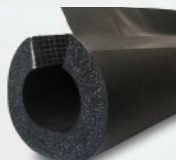
90° Elbows



Tees



Straight Sections 1.8 m (6 ft) long



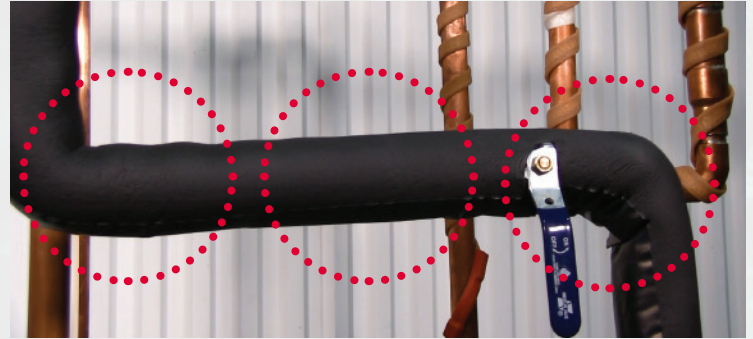
NOTE: ** Pipe/Tube Outside Diameters are listed as "Recommended"

| 90° Elbow Part No. | Pipe/Tube O.D. in** | I.D. in. | Pipe/Tube O.D. mm** | I.D. mm |
|-----------------------|------------------------|-------------|------------------------|------------|
| INSUL7890 | 1/2-5/8 | 7/8 | 13-16 | 22 |
| INSUL11890 | 3/4-7/8 | 1-3/8 | 19-22 | 29 |
| INSUL13890 | 1 | 1-3/8 | 25 | 35 |
| INSUL15890 | 1-1/8 | 1-5/8 | 29 | 41 |
| INSUL290 | 1-3/8 | 2 | 35 | 51 |
| INSUL21890 | 1-5/8 | 2-1/8 | 41 | 54 |
| INSUL23890 | 2 | 2-5/8 | 51 | 60 |
| INSUL25890 | 2-1/8 | 2-5/8 | 54 | 67 |
| INSUL27890 | 2-3/8 | 2-7/8 | 60 | 73 |
| INSUL31890 | 2-5/8 | 3-1/8 | 67 | 79 |
| INSUL31290 | 2-7/8 | 3-1/2 | 73 | 89 |
| INSUL35890 | 3-1/8 | 3-5/8 | 79 | 92 |
| INSUL41890 | 3-1/2 | 4-1/8 | 89 | 105 |
| INSUL41290 | 4 | 4-1/2 | 102 | 114 |
| INSUL55890 | 5 | 5-5/8 | 127 | 143 |
| INSUL65890 | 6 | 6-5/8 | 152 | 168 |

| Tee Part No. | Pipe/Tube O.D. in ** | I.D. in | Pipe/Tube O.D. mm** | I.D. mm |
|-----------------|-------------------------|------------|------------------------|------------|
| INSUL78T | 1/2-5/8 | 7/8 | 13-16 | 22 |
| INSUL118T | 3/4-7/8 | 1-1/8 | 19-22 | 29 |
| INSUL138T | 1 | 1-3/8 | 25 | 35 |
| INSUL158T | 1-1/8 | 1-5/8 | 29 | 41 |
| INSUL2T | 1-3/8 | 2 | 35 | 51 |
| INSUL218T | 1-5/8 | 2-1/8 | 41 | 54 |
| INSUL238T | 2 | 2-3/8 | 51 | 60 |
| INSUL258T | 2-1/8 | 2-5/8 | 54 | 67 |
| INSUL278T | 2-3/8 | 2-7/8 | 60 | 73 |
| INSUL318T | 2-5/8 | 3-1/8 | 67 | 79 |
| INSUL312T | 2-7/8 | 3-1/2 | 73 | 89 |
| INSUL358T | 3-1/8 | 3-5/8 | 79 | 92 |
| INSUL418T | 3-1/2 | 4-1/8 | 89 | 105 |
| INSUL412T | 4 | 4-1/2 | 102 | 114 |
| INSUL558T | 5 | 5-5/8 | 127 | 143 |
| INSUL658T | 6 | 6-5/8 | 152 | 168 |

Straights with Double-Seal Technology

- Built-in, pressure-sensitive adhesive
- Built-in PVC overlap tape with acrylic adhesive
- Scrim reinforcement on the seam surface



| Straight Section Part No. | Pipe/Tube O.D. in ** | I.D. in | Pipe/Tube O.D. mm** | I.D. mm |
|------------------------------|-------------------------|------------|------------------------|------------|
| INSUL78 | 1/2-5/8 | 7/8 | 13-16 | 22 |
| INSUL118 | 3/4-7/8 | 1-1/8 | 19-22 | 29 |
| INSUL138 | 1 | 1-3/8 | 25 | 35 |
| INSUL158 | 1-1/8 | 1-5/8 | 29 | 41 |
| INSUL2T | 1-3/8 | 2 | 35 | 51 |
| INSUL218 | 1-5/8 | 2-1/8 | 41 | 54 |
| INSUL238 | 2 | 2-3/8 | 51 | 60 |
| INSUL258 | 2-1/8 | 2-5/8 | 54 | 67 |
| INSUL278 | 2-3/8 | 2-7/8 | 60 | 73 |
| INSUL318 | 2-5/8 | 3-1/8 | 67 | 79 |
| INSUL312 | 2-7/8 | 3-1/2 | 73 | 89 |
| INSUL358 | 3-1/8 | 3-5/8 | 79 | 92 |
| INSUL418 | 3-1/2 | 4-1/8 | 89 | 105 |
| INSUL412 | 4 | 4-1/2 | 102 | 114 |
| INSUL558 | 5 | 5-5/8 | 127 | 143 |
| INSUL658 | 6 | 6-5/8 | 152 | 168 |



| Part No. | Description |
|----------|--|
| RTV3.0 | Silicone adhesive sealant used to seal 90° elbows and tees; 3 oz (89 ml) |
| PSAT36A | Standard Fiberglass Tape • Suitable for General Purpose Applications • Size: 0.5 in x 108 ft (12 mm x 33 m) • Silicone Adhesive • Temp Limit: 392°F (200°C) |
| AAT2180 | High Temperature Aluminum Tape • Designed for applications above 392°F (200°C) • Size: 2 in x 180 ft (51 mm x 55 m) • Silicone Adhesive w/ Liner • Temp Limit: 550°F (288°C) |

90° Elbows and Tees: Slits are cut by end user and require adhesive like RTV for installation



LYNX® PID Temperature Control Sets

Features & Benefits

- Compact PID control system with autotuning that controls almost any heater
- Everything needed to plug-and-play
- 3-button touch pad programming and large 3-digit display
- Latching alarms for high and low temperature
- Can be used independently or as a system at up to 1,024 zones of control
- Each module has up to 7 amp load at 77°F (25°C) ambient; 4 amp at 104°F (40°C)
- 6 ft (1.8 m) power cord with your choice of plug
- IP20



Intertek



Plug & Play



Ordering Information

| LYNX Set Part No. | Thermocouple Type | Input Power Plug | Heater Receptacle |
|-------------------|-------------------|------------------|-------------------|
| LYNX-SET-JA | Type-J | NEMA 5-15 | NEMA 5-15 |
| LYNX-SET-JD | Type-J | NEMA 6-15 | NEMA 6-15 |
| LYNX-SET-JI | Type-J | IEC Type I | IEC13 |

Other sensors and connections available

Optional Operator Interface for Centralized Monitoring

Features & Benefits

- Large 10.1 in (257 mm) in touchscreen
- User-configurable graphical mapping to application
- Global programming and monitoring
- Latching alarms for high and low temperature
- Can send email alerts
- Historical graphing of temperature and duty cycle
- USB port for firmware updates and to download data logs
- Modbus communication for remote access

Ordering Information

| Part No. | Description |
|-------------|---|
| LYNX-OI-10A | LYNX® Operator Interface with NEMA 5-15 plug |
| LYNX-OI-10D | LYNX® Operator Interface with NEMA 6-15 plug |
| LYNX-OI-10B | LYNX® Operator Interface with crimped ferrule leads |

Harness required for connecting operator interface to first LYNX™ set in a system.

Other models and voltages available upon request.

Accessories

| Part No. | Description |
|-------------|--|
| LYNX-HN-12A | Power and communication harness, 12 ft (3.7 m) long with NEMA 5-15 plug |
| LYNX-HN-12D | Power and communication harness, 12 ft (3.7 m) long with NEMA 6-15 plug |
| LYNX-HN-12B | Power and communication harness, 12 ft (3.7 m) long with crimped ferrule leads |



Ordering Details

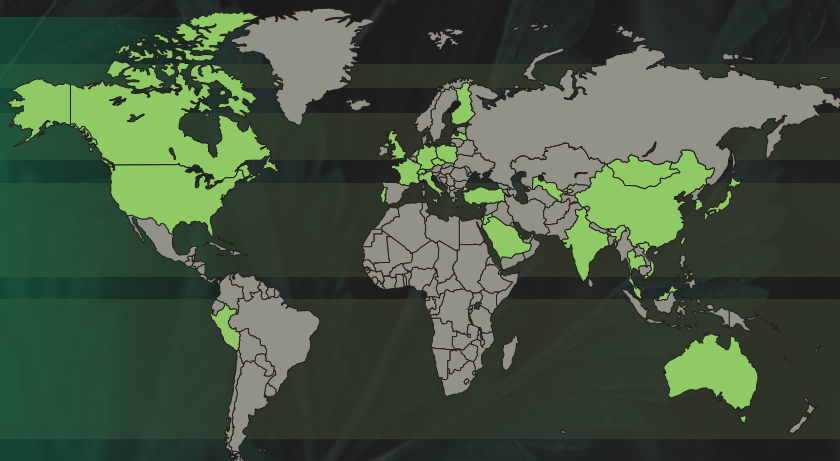
1. Contact your local distributor.

Check BriskHeat.com to locate a local distributor.

2. Call **BriskHeat®** at **800-848-7673** or **614-294-3376**.

We have a staff of application specialists to solve your unique needs.

3. Order online at **BriskHeat.com** 24/7.



We Can Help You, Any Time, Any Where.

BriskHeat Account Executives are a resource for corporate partners, local distributors, manufacturers' representatives, and end users. With distributors and reps located throughout North and South American, Asia, Europe, and Australia, local support is available to provide the right solution to your heating needs.

Many distributors also stock equipment to meet the demands of local industries and provide quick shipping.

BriskHeat®

4800 Hilton Corporate Drive
Columbus, OH 43232
614.294.3376 | 800.848.7673
BriskHeat.com
bhtsales1@briskheat.com