

SILICONE RUBBER COMPOSITE CURING HEATING BLANKETS

Features & Benefits

- ▶ Most durable and flexible composite curing heating blankets
- ▶ Flexible to 0.25 in (6 mm) radii
- ▶ Quick, efficient heat up to 450°F (232°C)
- ▶ Sizes up to 4 ft x 11 ft (1.2 m x 3.3 m)
- ▶ Moisture, chemical, and radiation resistant
- ▶ Boeing approved blankets available upon request
- ▶ Compatible with ACR® hot bonders and your current equipment— wide variety of power plug choices
- ▶ Flexibility makes it suitable for leading and trailing edge applications
- ▶ Durability eliminates the hassle and cost of replacing failed curing blankets
- ▶ Can be used on horizontal and vertical surfaces and on sharp radii surfaces without removing the damaged section
- ▶ Uniform, even heat throughout surface being heated
- ▶ Heater provides smooth surface against repair — no imprints on repaired surface left behind



Specifications

Flexibility: up to 0.25 in (6 mm) radii

Maximum Exposure Temperature: 450°F (232°C)

Power Density: 5 watts/in² (0.78 watts/cm²). Other power densities available upon request.

Heater Construction: Heating element laminated between two layers of silicone rubber, 66-mil thick

Silicone Rubber Density: 66 oz/yd² (2237 grams/m²)

Dielectric Strength: Over 2000 volts

Strain Relief: Built through entire edge of blanket for increased durability

Power Cord: 6 ft (1.8 m) long with choice of power plug. See page 207 for choices

IP Rating: IP54



SILICONE RUBBER COMPOSITE CURING HEATING BLANKETS

Ordering Information

Part Number Matrix

| SR | 5 | 120 | 06X12 | C |
|----|---|-----|-------|---|
|----|---|-----|-------|---|

Product Series: _____

Watt Density: _____

5-(5 watts/in²)

Voltage: _____

120-(120VAC), 240 (240VAC)

Dimensions: _____

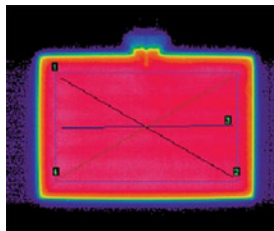
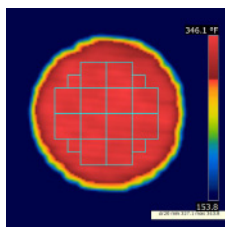
Rectangular, 06X12-(6 in x 12 in)

Round, 12D-(12 in diameter)

Power Plug: _____

See page 207 for choices

Contact us about Boeing Approved heaters and custom options



Custom designs and temperature uniformity testing available upon request

- Cutouts
- Holes
- Notches
- Uniformity testing
- Unique shapes and sizes
- Lead exit locations
- Built-in thermocouples

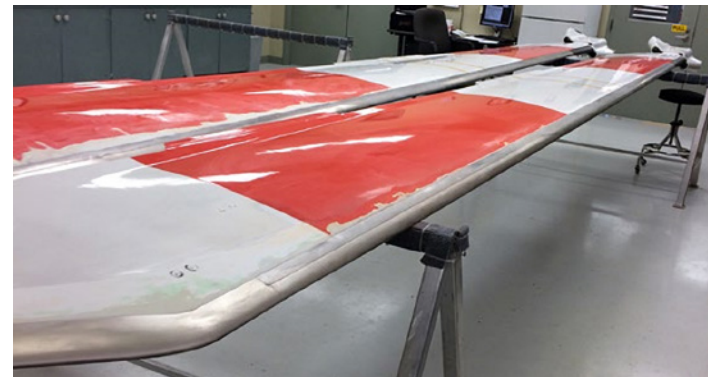
Standard Sizes and Wattage

Rectangular

| Width in (mm) | Length in (mm) | Total Watts |
|---------------|----------------|-------------|
| 6 (152) | 6 (152) | 180 |
| 6 (152) | 12 (305) | 360 |
| 6 (152) | 24 (610) | 720 |
| 8 (203) | 8 (203) | 320 |
| 10 (254) | 10 (254) | 500 |
| 12 (305) | 12 (305) | 720 |
| 12 (305) | 24 (610) | 1440 |
| 16 (406) | 16 (406) | 1280 |
| 18 (457) | 18 (457) | 1620 |
| 24 (610) | 24 (610) | 2880 |

Round

| Diameter in (mm) | Total Watts |
|------------------|-------------|
| 6 (152) | 140 |
| 8 (203) | 250 |
| 10 (254) | 395 |
| 12 (305) | 565 |
| 14 (356) | 770 |
| 16 (406) | 1005 |



Large sizes up to 4 ft x 11 ft (1.2 m x 3.3 m)

IMPORTANT: Temperature controller is required for this product. BriskHeat recommends the ACR® 3 or MiniPro™ Hot Bonder. See options starting on page 194.

