

GENERAL-PURPOSE WRAPAROUND TOTE TANK/IBC HEATERS & INSULATORS

Features & Benefits

- ▶ Insulated, full-coverage design
- ▶ Adjustable thermostat control — Up to 160°F (71°C)
- ▶ Two separate heat zones allow users to adjust heater output as content levels decrease
- ▶ Built-in high limit safety thermostat set at 195°F (91°C)
- ▶ Adjustable buckles allow heater to fit several sizes of caged, plastic, and metal tote tanks/IBCs
- ▶ 6 ft (1.8 m) long power cord with choice of plug or crimped ferrule leads
- ▶ Wrap-around blanket design allows you to heat a tote tank/IBC from the outside
- ▶ Even heat distribution and maximum energy efficiency
- ▶ Does not contaminate or scorch your product
- ▶ Easy-to-use — simple plug-and-play design
- ▶ Reusable and rugged — long service life
- ▶ Safe — heater has unique 360° grounded heating element and cool-touch surface for your safety



Image above shown with optional top cover (sold separately)

Specifications

Outer Material: Silicone impregnated cloth

Insulation: 0.25 in (6 mm) thick fiberglass

Height: 36 in (914 mm), 42 in (1067 mm), or 48 in (1220 mm)

Circumference: Fits any vessel from 160 in (4064 mm) to 192 in (4877 mm)

Closure Method: Adjustable nylon straps with buckles (two across the top and three around the tank)

Voltage Options: 120 or 240 VAC

Operating Temperature: Adjustable up to 160°F (71°C)

Maximum Exposure Temperature: 500°F (260°C)

Built-in High-Limit Safety Thermostat: Manual reset 195°F (91°C)

Heating Element: 360° grounded heating element for your safety

Dielectric Strength: Over 2000 volts

Power Cord: 6 ft (1.8 m) long

– 120 VAC: 3-prong grounded plug (NEMA 5-15P)

– 240 VAC: Choice of 3-prong grounded plug (NEMA 6-15P) or crimped ferrule leads

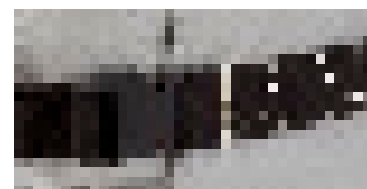
IP Rating: IP2X



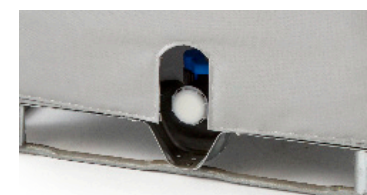
Plug & Play



Controls temperature easily with adjustable thermostats



Fits several tote tank sizes with adjustable nylon straps and buckles



Mouse hole provides easy access to spigot

CE (when ordered with crimped ferrule lead option)



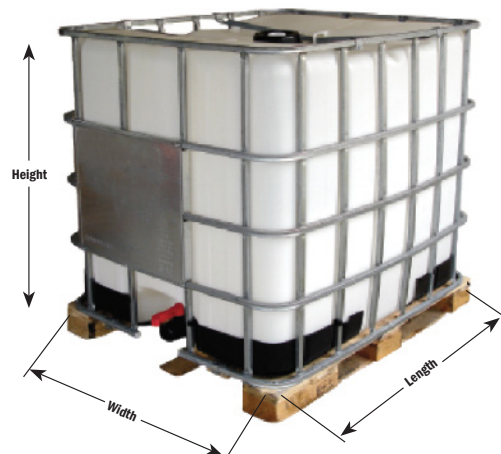
GENERAL-PURPOSE WRAPAROUND TOTE TANK/IBC HEATERS & INSULATORS

How to Measure Your Tote Tank/IBC

1. Measure the height of the tote tank /IBC (Not including the pallet or support stand).
2. Measure the length and width of the tank. This determines the tank perimeter for the heated area.

$$\frac{\text{Tank Length}}{\text{Tank Length}} \times 2 + \frac{\text{Tank Width}}{\text{Tank Width}} \times 2 = \text{Tank Perimeter}$$

Note: If tank perimeter measurement is below 160 in (4064 mm) or above 192 in (4877 mm), contact factory for heater recommendation.



Ordering Information

Part No. 120 VAC with NEMA 5-15P plug	Height in (mm)	Capacity gal (l)	Tank Perimeter Minimum in (mm)	Tank Perimeter Maximum in (mm)	Weight lbs (kg)	Total Wattage
TOTE361-ADJV	36 (914)	175 - 250 (640 - 950)	160 (4060)	192 (4880)	34 (15)	1440
TOTE421-ADJV	42 (1067)	275 (1000)	160 (4060)	192 (4880)	40 (18)	1440
TOTE481-ADJV	48 (1220)	330 (1250)	160 (4060)	192 (4880)	46 (21)	1440

Part No. 240 VAC with NEMA 6-15P plug	Part No. 240 VAC with crimped ferrule leads	Height in (mm)	Capacity gal (l)	Tank Perimeter Minimum in (mm)	Tank Perimeter Maximum in (mm)	Weight lbs (kg)	Total Wattage
TOTE362-ADJV	TOTE362-ADJ-CVE	36 (914)	175 - 250 (640 - 950)	160 (4060)	192 (4880)	34 (15)	2880
TOTE422-ADJV	TOTE422-ADJ-CVE	42 (1067)	275 (1000)	160 (4060)	192 (4880)	40 (18)	2880
TOTE482-ADJV	TOTE482-ADJ-CVE	48 (1220)	330 (1250)	160 (4060)	192 (4880)	46 (21)	2880

Accessories

Part No.	Description
TOTE-TOPV	Insulated top cover, minimizes heat loss

Dimensions of top cover: 40 x 40 in (1016 x 1016 mm) with 4 in (102 mm) wide flaps. Flaps expand maximum dimensions to 48 x 48 in (1219 x 1219 mm)
Insulation thickness of top cover: 0.25 in (6 mm)



Optional Insulating Cover

Custom Sizes and Designs Available: Contact BriskHeat® or your local distributor for more information.

EASY WAYS TO ORDER

1. Contact your local distributor. Check BriskHeat.com to locate a local distributor.
2. Call BriskHeat® at 800-848-7673 or 614-294-3376. We have a staff of application specialists to solve your unique needs.
3. Order online at BriskHeat.com - 24/7.

PAYMENT TERMS

Credit Card Options



Net 30 Option

Net 30 Terms are available to qualified companies. Please contact your Account Manager for additional details.