



Silicone Rubber Enclosure Heaters SREH

Instruction Manual



Read and understand this manual before installing, operating, or servicing this heater. Failure to understand these instructions could result in an accident causing serious injury or death. Only qualified personnel should install, operate, or service this heater.

Table of Contents

Introduction	2
Safety Alert Symbol	2
Important Safety Instructions	3
Prior to Installation	4
Mounting Your Heating Blanket	4
Connecting Heater to AC Power	5
Troubleshooting Guide	6
Warranty Information	7



SAFETY ALERT SYMBOL

The symbol above is used to call your attention to instructions concerning your personal safety. It points out important safety precautions. It means **“ATTENTION! Become Alert! Your Personal Safety is involved!”** Read the message that follows and be alert to the possibility of personal injury or death.

⚠ DANGER

Immediate hazards which **WILL** result in severe personal injury or death

⚠ WARNING

Hazards or unsafe practices that **COULD** result in severe personal injury or death

⚠ CAUTION

Hazards or unsafe practices that **COULD** result in minor personal injury or property damage

SAVE THESE INSTRUCTIONS!

Additional copies of this manual are available upon request.

© BriskHeat[®] Corporation. All rights reserved.

IMPORTANT SAFETY INSTRUCTIONS

⚠ DANGER

A person who has not read and understood all operating instructions is not qualified to operate this product.

⚠ DANGER

- Do not immerse or spray any component of the control system with liquid.
- Keep volatile or combustible material away from control and heating system when in use.
- Keep sharp metal objects away from control and heating system.
- Use control and heating system only in approved locations.

Failure to observe these warnings may result in electric shock, risk of fire, and personal injury.

⚠ WARNING

End User Must Comply to the Following:

- Only qualified personnel are allowed to connect electrical wiring
- All electrical wiring must follow local electrical codes and NEC Article 427
- The person who performs the final installation / wiring must be qualified for this work.
- The end-user is responsible for providing a suitable disconnect device
- The end-user is responsible for providing suitable electrical protection device. It is highly recommended that a ground fault circuit breaker be used.

Failure to observe these warnings may result in personal injury or damage to the product and/or property.

Agency Approvals



CSA Approval only available

Approvals valid only when installed in accordance with all applicable instructions.

⚠ CAUTION

- Inspect all components before use.
- Never handle the heater while it is in operation; always disconnect the heater from the power source and allow cooling prior to handling.
- Designed for use of metal surfaces. Do not use on plastic surfaces.
- If spillage of foreign matter onto heater occurs, disconnect from power source and clean after heater is allowed to cool.
- Never operate a heater without an appropriate heat sink (device being heated is considered a heat sink).
- Do not operate heater above rated temperature value.
- Fasten heater to device using approved methods only.
- Do not use control and heating system if any component is damaged.
- Do not repair damaged or faulty control and heating systems.
- Do not crush or apply severe physical stress on any component of system, including cord assembly.
- Unplug control and heating system when not in use.

Failure to observe these warnings may result in personal injury or damage to the heater.

⚠ WARNING

Read and understand this entire manual before operating this electric heater.

PRIOR TO INSTALLATION

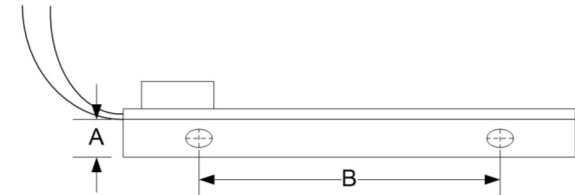
1. Check for suspected damage to the heating blanket like rips, punctures, etc.
2. Confirm voltage / wattage rating of heater. The heater is designed to work at a specific voltage to heat properly. For additional information, contact your local distributor or BriskHeat®.
3. Confirm blanket maximum exposure temperature rating is suitable for environment. The temperature of the internal heating element may run up to 25% higher than the external surface of the blanket. Use extreme caution for applications that require a process temperature near the maximum exposure temperature ratings of the blanket.
 - Silicone rubber heating blanket exposure temperature range: -70°F to 392°F (-57°C to 200°C)

MOUNTING YOUR HEATER ONTO THE ENCLOSURE SURFACE:

Your silicone enclosure heater is pre-attached to an aluminum mounting plate. The mounting plate has two 7/32" (5.5 mm) mounting holes pre cut into a 1/2" (13mm) flange (A).

Mounting Holes (B) are centered on the flange 4" apart for the 6" heater and 10" apart for the 12" heater.

Drawing:



Prior to mounting your heater:

1. Find a location within the enclosure where there is sufficient clearance between the heater and other components.
2. Determine whether vertical or horizontal mounting is preferable in the location chosen.
3. If the heater has a built-in thermostat and is to be mounted vertically, then thermostat should be located at the lower end.
4. Use the holes provided to mount the heater onto a sub-panel or to other available mounting surface.

CONNECTING HEATER TO AC POWER

⚠ WARNING

- **The heater is designed to operate at a specific voltage:** Refer to the lead wire label or stamp located on the heater for rated voltage and wattage. Failure to operate the heater at its rated voltage could cause damage to the heater, surface being heated, or contents.
- **All electrical connections must be made by qualified personnel and in accordance with all local codes and regulations.** Two wires (same color) should be connected to the power source directly, through a junction box, or to a connector that is mated to a receptacle connected to the power source. BriskHeat® SREH Silicone Rubber Enclosure Heaters are non-polarized, allowing either wire to be connected to the neutral or hot.
- **Properly sized circuit breakers must be used.** The end-user is responsible for providing suitable electrical protection device. It is highly recommended that a ground fault circuit breaker be used.

TROUBLESHOOTING GUIDE

Please read this guide prior to contacting BriskHeat®. This guide is designed to answer the most commonly asked questions. If you are unable to identify the problem or need additional assistance, please contact your local distributor/representative or us at **1-800-848-7673, 614-294-3376**, or **bhtsales1@briskheat.com**.

PROBLEM	SOLUTION(S)
Heater does not warm up	<p>Verify heater is connected to proper voltage.</p> <p>Check to see if there is a resistance reading (not an open circuit) in heater using an ohm meter.</p>
Circuit breaker is tripping	<p>Validate that the circuit breaker is capable of handling the amp requirement of heater. The identification label located on the power cord displays the heater's amperage requirement.</p> <p>Examine heater and cord for any damage.</p> <p>Check to see if there is a resistance reading between power leads and the ground lead.</p>

WARRANTY INFORMATION

BriskHeat warrants to the original purchaser of this product for the period of eighteen (18) months from date of shipment or twelve (12) months from date of installation, whichever comes first. BriskHeat's obligation and the exclusive remedy under this warranty shall be limited to the repair or replacement, at BriskHeat's option, of any parts of the product which may prove defective under prescribed use and service following BriskHeat's examination, is determined by BriskHeat to be defective. The complete details of the warranty can be found online at www.briskheat.com or by contacting us at 1-800-848-7673 (toll free, U.S. / Canada) or 1-614-294-3376 (Worldwide).

BriskHeat®
Corporation

4800 Hilton Corporate Dr. Columbus, OH 43232

Toll Free: 800-848-7673

Phone: 614-294-3376

Fax: 614-294-3807

Email: bhtsales1@briskheat.com