

CONTROL PANELS FREEZE PROTECTION

An easy and effective way to protect electrical components within control panels

Application

Electronic components inside control panels and monitoring devices need protected from cold temperatures. Control panels are often located outdoors, and if exposed to subfreezing temperatures, components could fail to operate properly and potentially become permanently damaged.

Solution

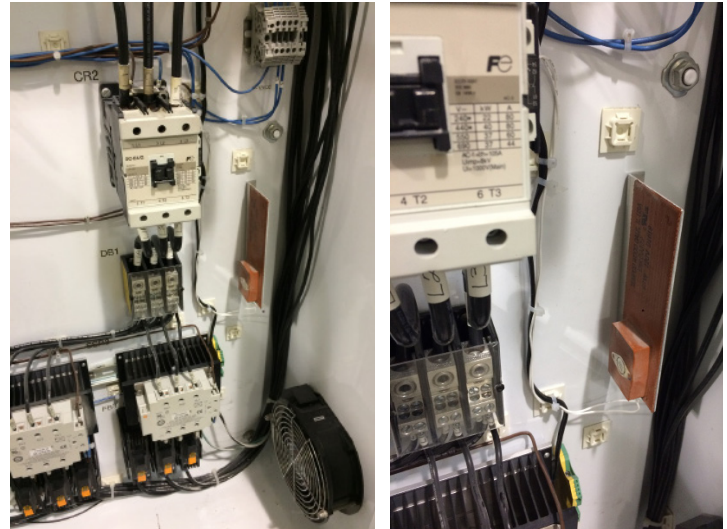
BriskHeat TSREH enclosure heaters keep the control panel's interior warm. TSREH heaters are silicone heaters pre-adhered to a steel plate. Easily mount the heater inside the panel using screws or bolts through the predrilled holes on the steel flange and make electrical connections. The plate mounting ensures that the heater is installed where it is needed most and held securely in place. The steel plate also helps radiate the heat for maximum effectiveness. A built-in ambient sensing thermostat automatically senses air temperature and switches the heater on and off to provide easy worry-free operation. TSREH enclosure heaters have a small profile of only 2.5 in (64 mm) minimizing required space within the panel.

The addition of a panel heater to a control panel such as the MPC2 series, provides more flexibility. Internal panel heaters also prevent condensation.

For larger panels or those in hazardous areas, SRL, or SRX silicone blankets can be used.

Additional Uses

Enclosure heaters are also used in a variety of outdoor cabinets and enclosures to protect cold-sensitive components. Examples include mechanical control panels, gate operation, parking garages, outdoor electrical panels, and more.



Industries

Agriculture	Gas & Oil
Chemical Processing	Heavy Industry/Mining
Energy/Power Generation	Manufacturing
Food & Beverage Processing	Water/Wastewater Treatment

Types of Users

Process Engineers	Maintenance Managers
Production Managers	Facilities Maintenance