

Temperature Controllers and Accessories for Silicone Rubber Heating Blankets

SDC Benchtop Temperature Controller Features:

- Temperature Control Range: 32°F to 999°F (0°C to 600°C)
- Choose J-type or K-type Thermocouple Sensor
- 120 VAC or 240 VAC power input
- Models for °F or °C display
- 10-Amp Fused Output



TTD Outdoor-Use Digital On/Off Thermocouple Temperature Controller Features:

- 120 or 240VAC
- 15 amps
- Digital On/Off controller
- Plug-in operation
- Type K thermocouple input
- Compact portable design



TB4000 High Capacity Bulb and Capillary Temperature Controller Features:

- Maximum controller exposure temperatures: -40°F to 160°F (-40°C to 71°C)
- 304 stainless steel bulb and capillary, 10 feet (3 m) long
- Manually set your desired temperature
- Suitable for outdoor use



TB250N All-Purpose Bulb and Capillary Temperature Controller Features:

- Maximum controller exposure temperatures: -40°F to 160°F (-40°C to 71°C)
- Manually set your desired temperature
- Tinned copper bulb and capillary, 10 ft (3 m) long
- Suitable for outdoor use



TD 101 Automatic On/Off Thermostat Control Features:

- Single pole double throw (SPDT)
- Numerous temperature range choices to fit your application
- Maximum exposure temperature -40°F to 221°F (-40°C to 105°C)
- Mounts directly to heated surface

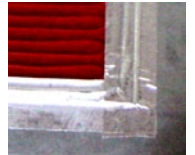


Adhesive Tape

Maintains the heating blanket in intimate contact with the surface to be heated while pressure sensitive adhesive cures.



Part Number	Description
AAT2180	Aluminum Adhesive Tape: Size: 2" x 180' (51 mm x 55 m) Temp Limit: 550°F (288°C)



Heat Conductive Putty

Used to fill voids between blanket and surface being heated.

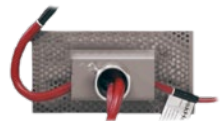
Part Number	Description
HCP1	Size: 1 lb. (0.5kg)
HCP3	Size: 3 lb. (1.4kg)



Strain Relief / Conduit Bracket

Provides strain relief for the heater's power wires and a straight connector mount for connecting 3/4" or 21mm electrical conduit.

Part Number	Description
SRLCB	Strain Relief Conduit Bracket



Insul-EZ™ Adhesive Backed Sheet Insulation

Easy-to-install peel-and-stick adhesive backed sheet insulation for heaters and enclosures to reduce heat loss.

Part Number	Description
INSULEZ48	48" x 48" (122cm x 122cm) Adhesive Backed Sheet Insulation



RTV Sealant

Silicone sealant used to seal lead pouches, end pouches, and pipe standoffs.

Part Number	Description
RTV3.0	3 oz. (89 ml)

